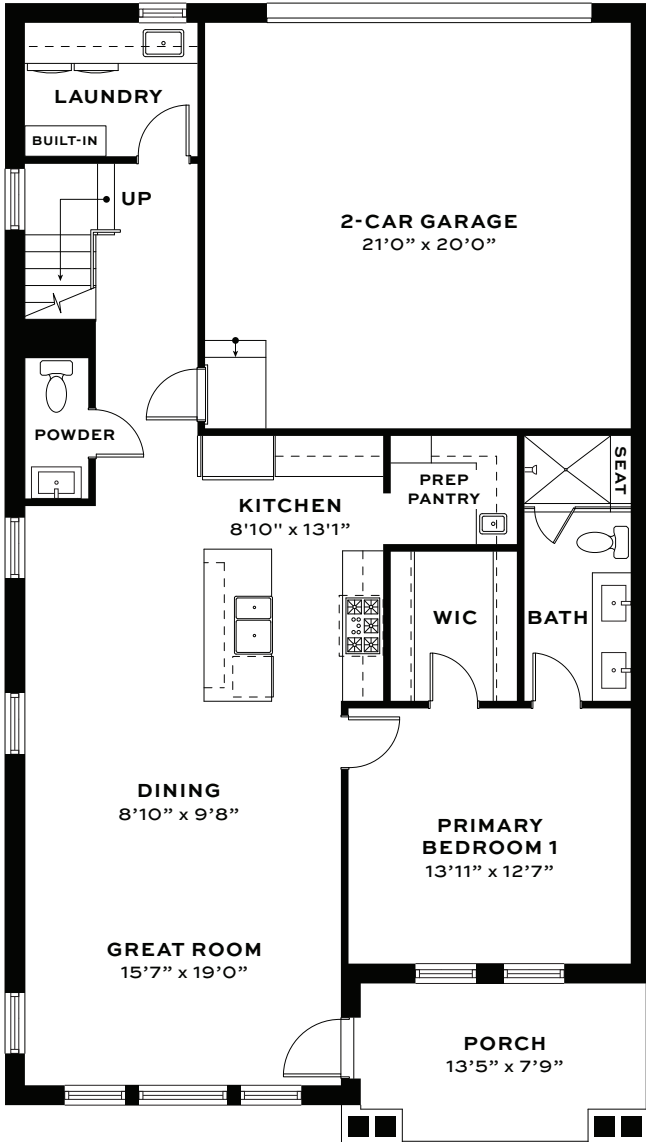


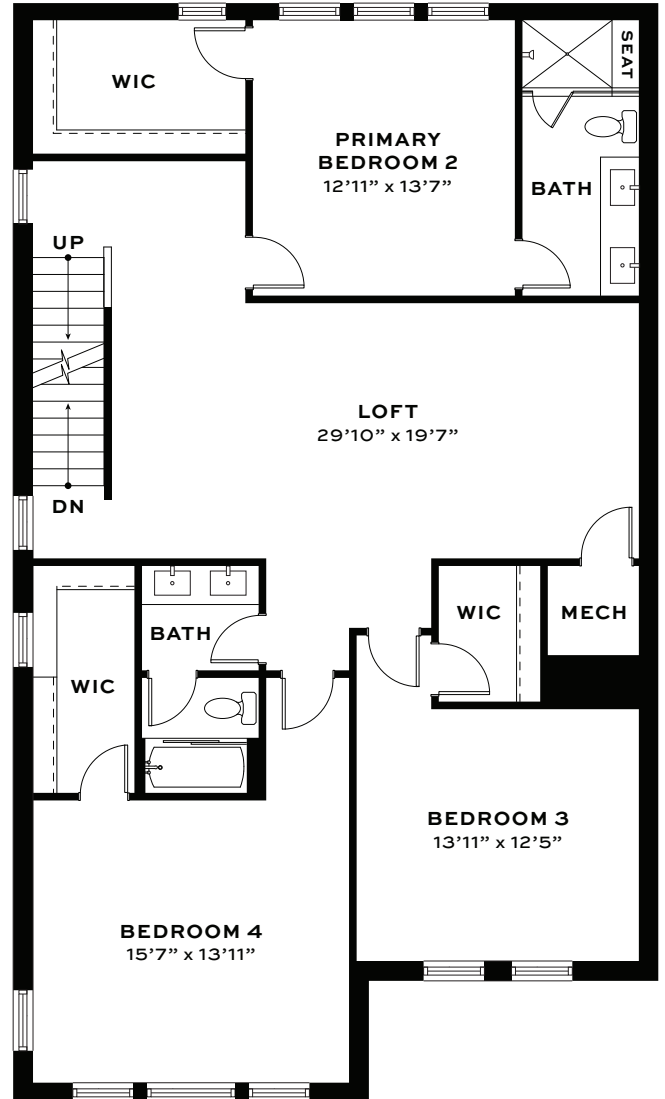
GRISWOLD TOWNHOMES

FLOORPLAN A

- 2,765 Interior Sq. Ft.
- 3 Full Bathrooms, 1 Half
- Covered Front Porch
- 2-Car, Private, Attached Garage
- 4 Bedrooms
- Stair Access to 3rd Floor Attic



FIRST FLOOR



SECOND FLOOR

- 2,765 Interior Sq. Ft.
- 2-Car, Private, Attached Garage
- 3 Full Bathrooms, 1 Half
- 4 Bedrooms
- Covered Front Porch
- Stair Access to 3rd Floor Attic

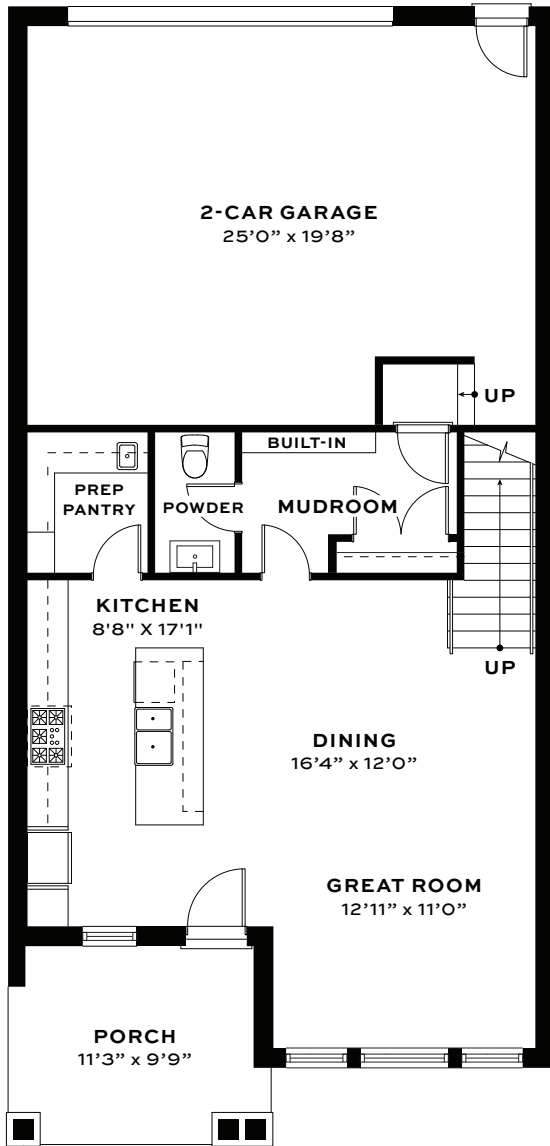


THIRD FLOOR ATTIC
(UNFINISHED - STORAGE ONLY)

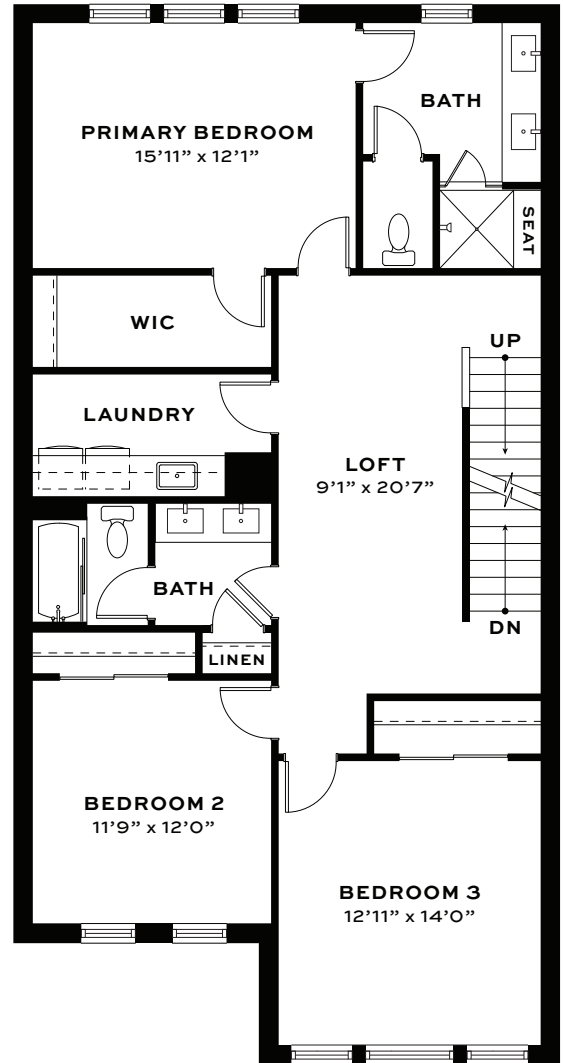
GRISWOLD TOWNHOMES

FLOORPLAN B

- 2,041 Interior Sq. Ft.
- 2 Full Bathrooms, 1 Half
- Covered Front Porch
- 2-Car, Private, Attached Garage
- 3 Bedrooms
- Stair Access to 3rd Floor Attic

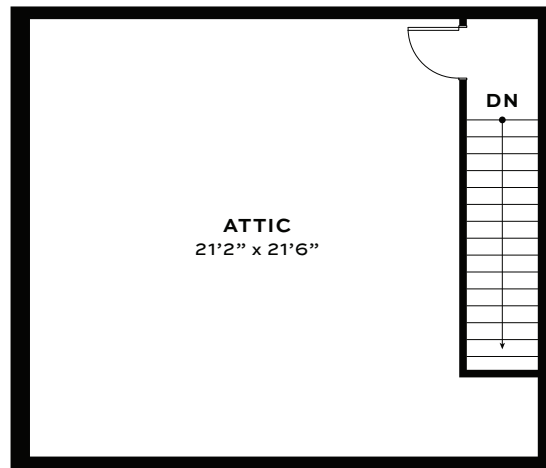


FIRST FLOOR



SECOND FLOOR

- 2,041 Interior Sq. Ft.
- 2 Full Bathrooms, 1 Half
- Covered Front Porch
- 2-Car, Private, Attached Garage
- 3 Bedrooms
- Stair Access to 3rd Floor Attic



THIRD FLOOR ATTIC
(UNFINISHED - STORAGE ONLY)