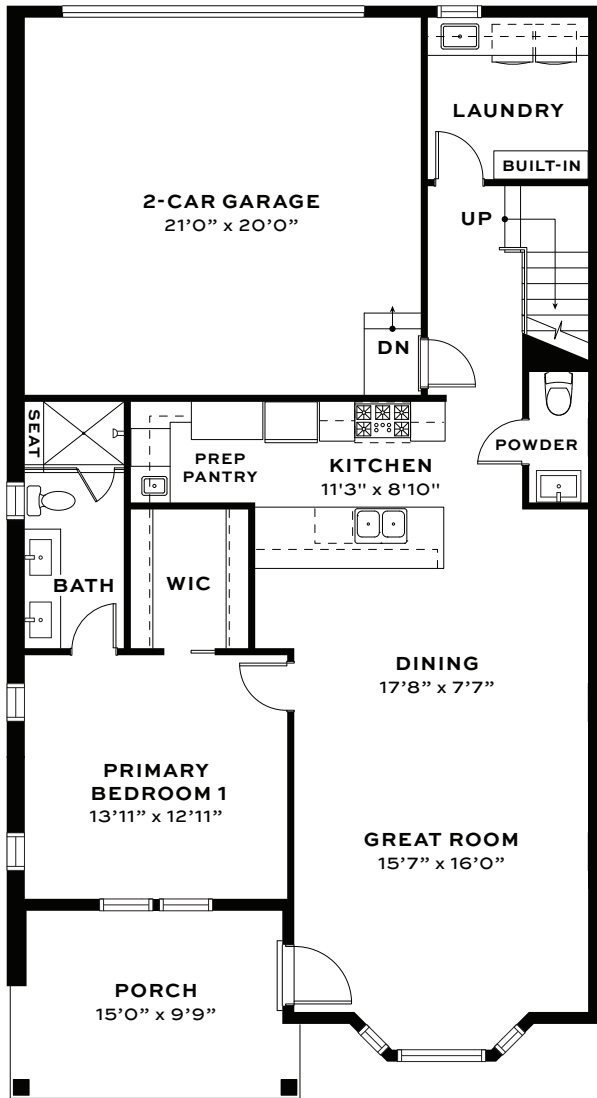


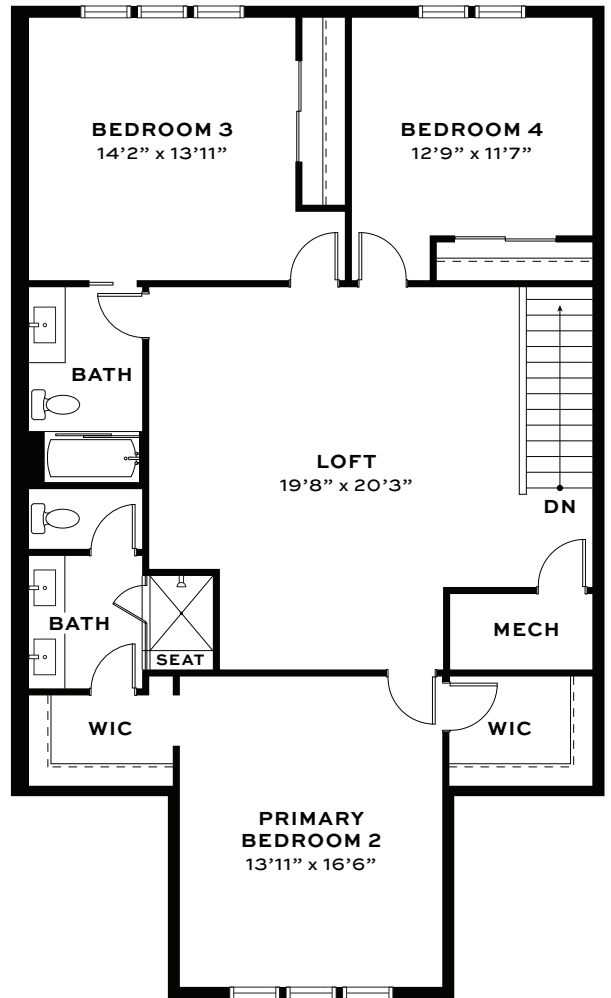
THE CARRIAGE HOMES

FLOORPLAN A

- 2,428 Interior Sq. Ft.
- 3 Full Bathrooms, 1 Half
- Covered Front Porch
- 2-Car, Private, Attached Garage
- 4 Bedrooms



FIRST FLOOR



SECOND FLOOR

248-305-7100 LiveNorthvilleDowns.com TheDowns@HunterPasteurHomes.com

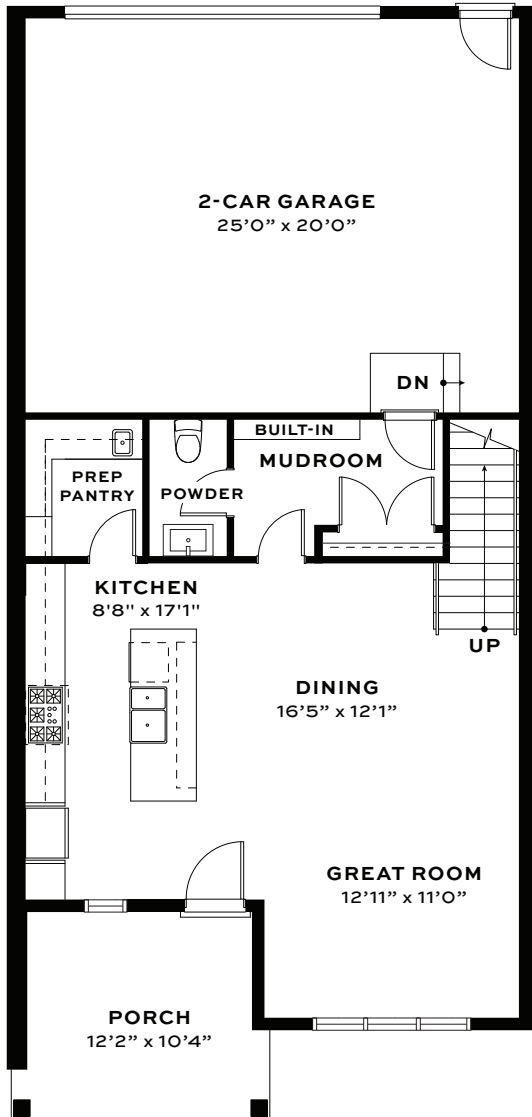
Renderings are artist conceptions that may not be to exact scale and are not intended to show specific detailing. We reserve the right to make changes to prices, specifications, and materials without prior notice or obligation. Features/amenities shown are based upon current development plans that are subject to change.

THE
DOWNNS
NORTHVILLE

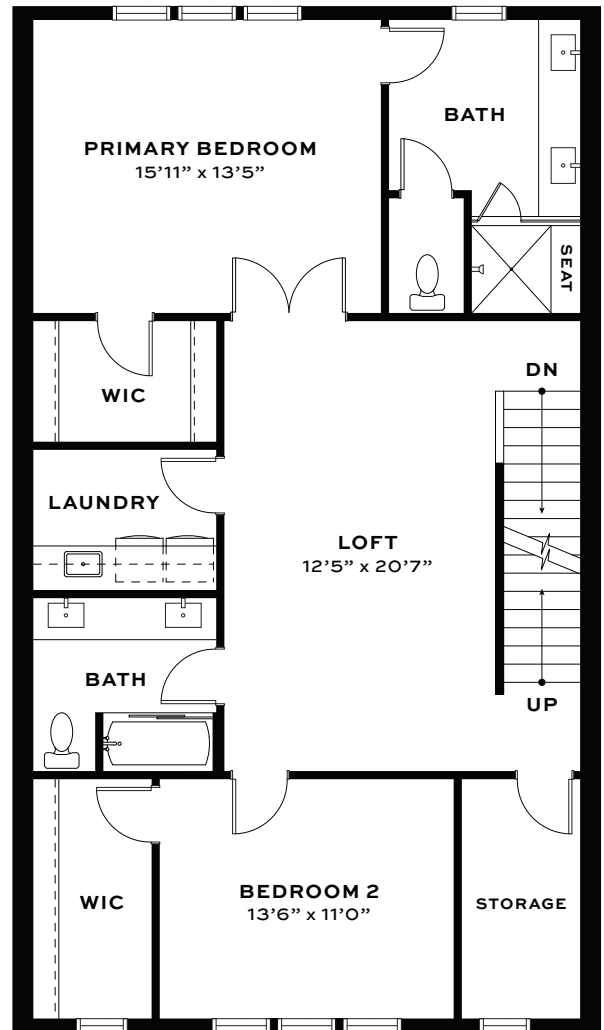
THE CARRIAGE HOMES

FLOORPLAN B

- 1,967 Interior Sq. Ft.
- 2 Full Bathrooms, 1 Half
- Covered Front Porch
- 2-Car, Private, Attached Garage
- 2 Bedrooms
- Stair Access to 3rd Floor Attic

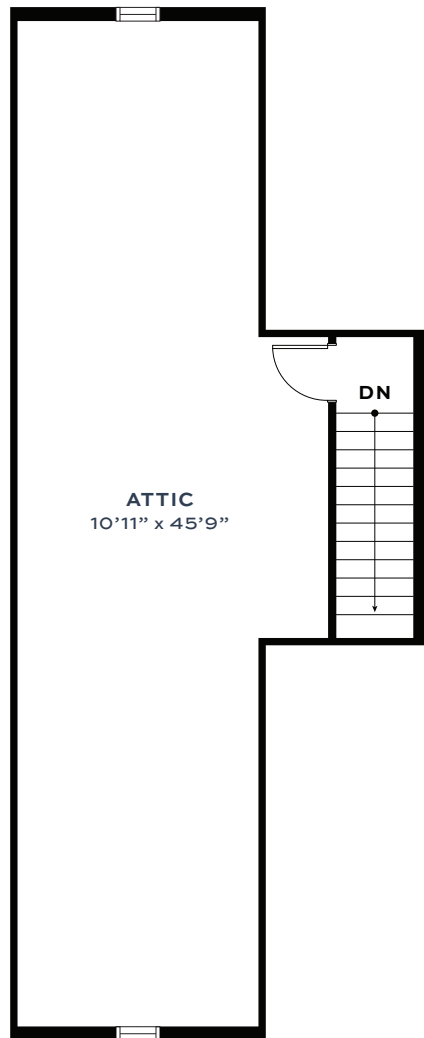


FIRST FLOOR



SECOND FLOOR

- 1,967 Interior Sq. Ft.
- 2 Full Bathrooms, 1 Half
- Covered Front Porch
- 2-Car, Private, Attached Garage
- 2 Bedrooms
- Stair Access to 3rd Floor Attic



THIRD FLOOR ATTIC
(UNFINISHED - STORAGE ONLY)